

SWITCHES & WATER DRAWBACK VALVES

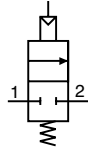
WATER DRAWBACK VALVES



When this N.C. valve closes, a spring biased internal piston draws back a small volume on outlet side (approx. 6-7" in 1/8" I.D. tube) preventing overflow.

Part No.	Description
WDV-2	Poppet Valve with Air Pilot, #10-32
WDV-2P	Poppet Valve with Air Pilot, 1/8" NPT

Medium	Water or other light liquids
Input Pressure	100 psig max.
Pilot Pressure	25 psig min.
Flow	74 cu. in. H ₂ O per min. @ 80 psig
Drawback	0.07 cubic inches (1.2 mL)
Mounting	In-line
More Details	clippard.com/link/drawback



Ideal for use in quenching or water spray applications.

PRESSURE ACTUATED SWITCHES



These miniature (**MAS**) and sub-miniature (**SAS**) air switches utilize a single pole, double throw (SPDT) electrical switch. Manual models may be used with Clippard air pilot or push-button actuators.

Medium	Air
Input Pressure	5 to 150 psig
Pilot Port	#10-32, 1/8" NPT
Mounting	External thread and nut for panel, bracket, or bulkhead mounting—5/8-32 pressure actuated, 15/32-32 manually operated
Accuracy	Actuation pressures listed are nominal values only*
More Details	clippard.com/link/sas-mas

*For applications where a tight tolerance for actuation or deactuation is needed, please call 877-245-6247.

ORDERING INFORMATION



SAS Sub-Miniature Air Switch
MAS Miniature Air Switch

Switch Current Rating

SAS
A 5A @ 125/250 VAC
 3A @ 30 VDC/.1A 60 VDC
X No switch

MAS

B 3A @ 125/250 VAC
 3A @ 30 VDC
C 10A @ 125/250 VAC
 5A @ 50 VDC
X No switch

Nominal Actuation Pressure*

06 6 psig
20 20 psig
40 41 psig
65 65 psig
MN Manual

Inlet Port

Blank #10-32 thd.
F 1/8" NPT female
P 1/8" NPT male

Switch Terminals

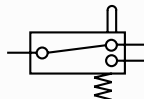
SAS **0** No switch
1 110 series Q.C.

MAS **0** No switch
2 187 series Q.C.
3 Screw terminals

SINGLE POLE ELECTRICAL SWITCH



ES series switches are used in conjunction with MPA series actuators (p. 90)



Part No.	Description
ES-1 15601	Single Pole, Double Throw Snap-Action Electrical Switch Terminal Cover

Stem Travel	1/8"
Rating, AC	120, 240, or 480 volts (15 amperes)
Rating, DC	125 volts (0.5 amperes) 250 volts (0.25 amperes)
Approvals	UL, CE
Mounting	#15/32-32 thread; nut and lockwashers furnished; two 0.140" dia. mounting holes in body
More Details	clippard.com/link/es-1